

Anxiety is a better predictor of platelet reactivity in coronary artery disease patients than depression

M. Urooj Zafar^{1†}, Manuel Paz-Yepes^{1†}, Daichi Shimbo², Gemma Vilahur¹, Matthew M. Burg^{2,3}, William Chaplin⁴, Valentin Fuster¹, Karina W. Davidson², and Juan J. Badimon^{1*}

¹Mount Sinai School of Medicine, One Gustave L. Levy Place, Box 1030, New York, NY 10029, USA; ²Columbia University Medical Center, New York, NY, USA; ³Yale University School of Medicine, New Haven, CT, USA; and ⁴St John's University, Jamaica, NY, USA

Received 30 June 2009; revised 2 December 2009; accepted 17 December 2009; online publish-ahead-of-print 22 January 2010

See page 1548 for the editorial comment on this article (doi:10.1093/eurheartj/ehq097)

Aims

Depression and anxiety are linked to coronary events but the mechanism(s) remains unclear. We investigated the associations of depression and anxiety with serotonin-mediated platelet hyperactivity in coronary artery disease (CAD) patients in a cross-sectional study.

Methods and results

Three months after an acute coronary event, stable CAD patients ($n = 83$) on aspirin and clopidogrel were evaluated for depression (beck depression inventory) and anxiety (hospital anxiety and depression scale), and their platelet reactivity was measured (optical aggregometry and flow cytometric fibrinogen binding in response to adenosine diphosphate (ADP = 5 μ M) and two serotonin + epinephrine doses [5HT:E (L) = 4 μ M + 4 μ M and 5HT:E (H) = 10 μ M + 4 μ M]). Platelet reactivity was significantly higher in *depressed and anxious* than in *depressed only* or *non-depressed-and-non-anxious* patients. Aggregation (mean \pm SE) was $41.9 \pm 2.6\%$ vs. $32.2 \pm 2.6\%$ vs. $30.4 \pm 3.7\%$ with 5HT:E (L) and $46.9 \pm 2.7\%$ vs. $35.6 \pm 2.7\%$ vs. $31.7 \pm 3.8\%$ with 5HT:E (H) ($P < 0.05$ for both). Differences in ADP aggregations were not significant, perhaps because of clopidogrel therapy. Flow cytometry findings were similar. In a multivariate linear regression model adjusted for age, body mass index, and each other, anxiety symptoms independently predicted all 5HT:E-mediated platelet reactivity measures, whereas depression predicted none.

Conclusion

Anxiety is associated with elevated serotonin-mediated platelet reactivity in stable CAD patients and symptoms of anxiety show strong, independent correlations with platelet function.

Keywords

Anxiety • Coronary artery disease • Depression • Myocardial infarction • Platelets

Introduction

Coronary artery disease (CAD) and its thrombotic manifestations remain the leading cause of morbidity and mortality in the industrialized nations. The importance of psychosocial factors as contributors to the incidence and progression of CAD has been the focus of a concerted research effort over the years.^{1–8} For example, the INTERHEART study,⁹ a case–control examination of modifiable risk factors in 52 countries, found that a composite variable comprises exposure to depression, perceived life stress, low control,

and major life events carried an adjusted 2.67-fold increased risk of acute myocardial infarction (AMI). Indeed, the contribution of depression and anxiety to increased likelihood of recurrent coronary events after AMI and bypass surgeries,^{2,10–13} and transient depressed and anxious mood as trigger acute cardiac events and potentially fatal arrhythmias is well documented.^{14–16} The risk associated with depression in these populations, where its prevalence can be up to 10 times greater than in the healthy groups,^{17,18} is comparable to that of smoking, hypertension or diabetes, and independent of such traditional cardiovascular risk

* Corresponding address. Tel: +1 212 241 8484, Fax: +1 212 426 6962, Email: juan.badimon@mssm.edu

†The first two authors contributed equally to the study.

Published on behalf of the European Society of Cardiology. All rights reserved. © The Author 2010. For permissions please email: journals.permissions@oxfordjournals.org

factors such as left ventricular ejection fraction, history of myocardial infarction or Killip class.^{19–22} On the basis of this literature, an American Heart Association science advisory has recommended screening for depression in CAD patients.²³

Anxiety is also highly prevalent in cardiac populations, with estimates ranging from 28 to 44% in younger groups and from 14 to 24% in older groups.^{24,25} Furthermore, anxiety is a frequently encountered co-morbidity of depression.²⁶ Though the aetiologies, mechanisms, and sequelae of anxiety and depression share many commonalities,^{27,28} there are many distinctions as well.²⁹ The impact of depression on cardiac events has been extensively investigated.¹⁹ The few studies that have evaluated the prognostic value and individual contribution of depression and/or anxiety towards CAD outcomes show that when evaluated concurrently, anxiety frequently carries the cardiac risk alone,^{30–33} although this observation is not universal.³⁴

Increased platelet reactivity is one of several mechanisms postulated in explaining the link between psychosocial factors and CAD.^{35–37} A recent review by Bruce and Musselman³⁸ found considerable evidence linking depression to increased platelet activation in both groups with extant CAD and those with only CAD risk factors. Others have found greater platelet responsiveness and prolonged platelet activation among individuals characterized by hostility and chronic psychological stress.^{39–41} Acute psychological stress can similarly affect platelet function,⁴² particularly among those prone to anxiety.⁴³

Platelets are activated by their interaction with various circulating agonists (including serotonin and catecholamines) via separate and specific receptors in the platelet membrane. Serotonin (5HT) is considered an important element in psychopathology and psychopharmacology and specific 5HT_{2A} receptors have been reported to play a role in platelet aggregation.⁴⁴ A higher 5HT-mediated platelet reactivity has been described in depressed patients compared with healthy, non-depressed adults.⁴⁵ Alternatively, catecholamines activate platelets via stimulation of platelets' α -2 receptors.^{46,47} As the two agonists act through different pathways, a synergistic effect between 5HT and epinephrine on platelets has been observed;⁴⁸ levels of autonomic activity and circulating catecholamines are elevated in patients with anxiety,⁴⁹ which could lead to the activation of platelets in these patients. Given the link of depression and anxiety with increased risk of cardiovascular events, we investigated their associations with platelet reactivity in patients with stable CAD.

Methods

Study population and design

The study was conducted using a cross-sectional design on CAD patients admitted to the Mount Sinai Medical Center in New York for acute coronary syndrome (ACS), including AMI and unstable angina from April 2005 to March 2008. Patients were recruited ($n = 83$) during their first week of admission for ACS and scheduled for follow-up visit 3 months later to allow any post-ACS changes in platelet function to subside and for the platelet reactivity to stabilize. During 3-month follow-up visit, patients were assessed for symptoms of depression and anxiety, and their platelet reactivity was measured by investigators blinded to the results of these assessments (Figure 1). All subjects were on daily aspirin (81 mg) and clopidogrel (75 mg) therapy at the time of platelet testing.

The study complies with the Declaration of Helsinki and was approved by the Institutional Review Board of Mount Sinai Medical Center. A written informed consent was obtained from each patient before initiating any study-related procedures.

Inclusion criteria

Patients 18 years and older were eligible if they had been hospitalized for an ACS event—either AMI with or without ST-elevation or unstable angina.

Exclusion criteria

Active suicidal or homicidal ideation (these patients require and were provided immediate referral for further evaluation); antidepressant treatment within 6 weeks prior to study enrolment; current alcohol or other substance abuse disorders; any current psychotic disorder; history of psychotic, bipolar or serious personality disorders; diagnosis of a terminal non-cardiac illness; inability to communicate in English or Spanish; levels of cognitive impairment indicative of dementia.

Assessment of depression and anxiety symptom severity

Patients completed the Beck depression inventory (BDI)⁵⁰ and the anxiety subscale of the hospital anxiety and depression scale (HADS-A),⁵¹ each of which measure symptom severity. These scales are commonly used in research and clinical practice, and scores have been linked to post-ACS prognosis in prior research.³⁴

For categorical analysis, patients were classified as depressed if they had a BDI score of ≥ 10 . Although this threshold is not specific for major depression, it is clinically meaningful, and prior research has found this threshold to carry increased risk for post-ACS recurrent cardiac events.¹⁹ Patients were similarly classified as anxious, if they had a HADS-A score of ≥ 8 , using previously published cutoffs for identifying individuals with clinically meaningful levels of anxiety.^{52,53} This classification yielded four groups: (i) *non-depressed and non-anxious*, (ii) *depressed only*, (iii) *anxious only*, and (iv) *depressed and anxious*.

Blood sampling

Platelet reactivity was measured during the office visit scheduled 3 months after the ACS event. Steps were taken to standardize blood collection procedures as much as possible, including scheduling the blood sampling around the same time of day (early afternoon) and collecting the blood after the interview, allowing physical rest time for the patient before the blood draw. In order to minimize unintended platelet activation, tourniquet pressure was kept to a minimum during the 19-gauge butterfly stick and the initial 3 mL of blood was discarded. Samples were then collected in 3.2% sodium citrate tubes that were gently inverted 3–5 times and kept in upright position till processing. Tests for the measurement of platelet reactivity were initiated within 2 h of blood collection.

Platelet reactivity

Two different techniques were employed for the measurement of platelet reactivity: optical aggregometry and flow cytometry. In both methodologies, platelets were activated using three agonists: (i) adenosine diphosphate (ADP 5 μ M), (ii) 5HT:E (L) (serotonin 4 μ M with epinephrine 4 μ M), and (iii) 5HT:E (H) (serotonin 10 μ M with epinephrine 4 μ M). As serotonin alone is a weak agonist of platelets, a fixed concentration of epinephrine was added to both of its doses to amplify its stimulatory effect.

- Platelet aggregation studies were conducted in platelet-rich plasma using optical aggregometry as previously described.⁵⁴ The aggregometer (Model 570VS) and reagents for platelet aggregation were purchased from Chrono-log, Havertown, PA, USA.

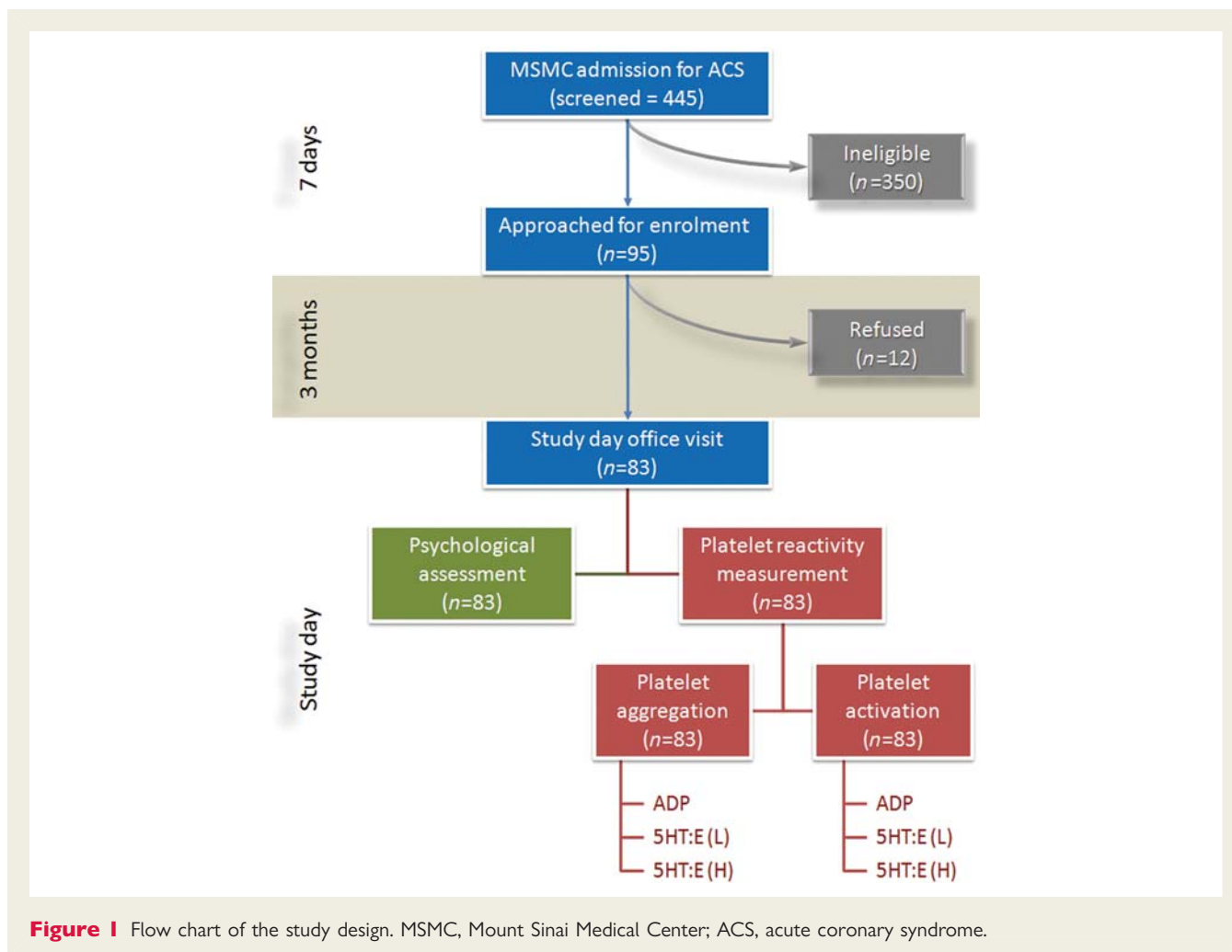


Figure 1 Flow chart of the study design. MSMC, Mount Sinai Medical Center; ACS, acute coronary syndrome.

- Platelet surface receptor activation studies were carried out in whole blood by measuring fibrinogen binding to the glycoprotein IIb/IIIa receptor complex on platelet surface, following activation with ADP and 5HT:E.⁵⁴ Blood sample was split into 200 μ L aliquots, and incubated with the agonists for 10 min, followed by 30 min of direct immunofluorescence staining. Phycoerythrin-conjugated CD42b antibody (Immunotech, Fullerton, CA, USA) was used to label all platelets and the activated sub-population was identified using the anti-human fibrinogen antibody conjugated with fluorescein isothiocyanate (WAK-Chemie Medical GmbH, Steinbach, Germany). Samples were fixed with 2% paraformaldehyde and analysed in BD FACSCalibur™ using CellQuest Pro software (BD Biosciences, San Jose, CA, USA) without delay.

Statistical analysis

The data were analysed using SPSS (version 16) and SYSTAT (version 10) statistical software. Data are summarized as means \pm standard deviations (unless specified otherwise) or percentages for frequency data. Statistical significance was set at the nominal $P < 0.05$ level and no adjustments were made for multiple comparisons. Standard univariate plots (e.g. stem and leaf, boxplots) and bivariate plots (e.g. residual-predictor, quantile–quantile) were used to assess distributional and other assumptions of the analyses. We did not find any clear departures from these assumptions in these data.

Simple correlations were used to summarize the basic relation of anxiety and depression symptom severity with platelet aggregation, and multiple regression was used to evaluate the partial relation of these two factors to platelet aggregation measures, adjusting for the covariates and each other. Covariates were selected judiciously based on consistent significant correlations between the covariates and the independent or dependent variables. For the categorical analyses, anxiety and depression were dummy coded using the standard cutoffs described previously, as 0 = below the cutoff and 1 = at or above the cutoff. The covariates were centred around their sample mean as were the BDI and HADS-A scores for the continuous analysis. The predicted aggregation measures were adjusted at the means of the covariates. The sample size for this study is relatively small, but with this sample size we had power of 0.80 to detect moderate simple correlations and for the regression analysis we had power of 0.80 to detect a large population partial correlation.

The authors had full access to the data and take responsibility for its integrity. All authors have read and agree to the manuscript as written.

Results

Demographic characteristics of the total study population and its grouping according to depression and anxiety status are presented

Table 1 Baseline characteristics of the study population

	Total (n = 83)	Non-depressed, non-anxious (n = 17)	Depressed only (n = 32)	Depressed and anxious (n = 32)	P-value	Anxious only (n = 2)
Age (years)	61.9 ± 11.1	61.9 ± 13.8	65.0 ± 9.8	59.7 ± 10.4	0.15	50.0 ± 1.4
Males (%)	41 (49.4)	12 (70.6)	13 (40.6)	14 (43.8)	0.11	2 (100.0)
Body mass index (kg/m ²)	29.7 ± 5.7	26.8 ± 5.2	30.7 ± 7.5	30.7 ± 4.9	0.08	27.9 ± 1.8
Diabetes (%)	38 (45.8)	7 (43.8)	15 (46.9)	16 (50.0)	0.92	0 (0.0)
Current smoker (%)	22 (26.5)	3 (17.6)	10 (31.3)	8 (25.0)	0.58	1 (50.0)
Hypertension (%)	70 (84.3)	15 (88.2)	28 (87.5)	27 (84.4)	0.91	0 (0.0)
Hypercholesterolaemia (%)	61 (73.5)	11 (64.7)	21 (67.7)	28 (87.5)	0.11	1 (50.0)
Previous MI (%)	20 (24.7)	1 (5.9)	10 (31.2)	9 (28.1)	0.12	0 (0.0)
Systolic BP (mmHg)	129.3 ± 20.2	124.9 ± 19.6	134.9 ± 20.8	127.4 ± 20.0	0.21	114.5 ± 13.4
Diastolic BP (mmHg)	74.4 ± 11.4	76.2 ± 7.8	71.8 ± 10.8	75.3 ± 13.5	0.35	77.5 ± 3.5
Total cholesterol (mg/dL)	155.3 ± 45.4	157.9 ± 43.5	145.5 ± 41.1	163.7 ± 51.1	0.97	165.5 ± 0.7
LDL (mg/dL)	87.4 ± 37.1	95.5 ± 39.6	82.0 ± 33.5	89.4 ± 40.5	0.48	74.5 ± 13.4
HDL (mg/dL)	45.6 ± 12.5	42.4 ± 8.7	48.2 ± 13.7	44.8 ± 11.2	0.12	52.5 ± 36.1
Triglycerides (mg/dL)	113.1 ± 80.8	116.5 ± 96.7	83.6 ± 42.1	134.5 ± 92.1	0.58	192.0 ± 107.5
Beta-blockers (%)	60 (72.3)	11 (64.7)	25 (78.1)	23 (71.9)	0.60	1 (50.0)
Lipid-lowering meds. (%)	69 (83.1)	15 (88.2)	24 (75.0)	28 (87.5)	0.33	2 (100.0)
ACE-inhibitors (%)	35 (42.2)	6 (35.3)	15 (46.9)	14 (45.2)	0.72	0 (0.0)
ARBs (%)	16 (19.8)	2 (11.8)	5 (15.6)	9 (28.1)	0.30	0 (0.0)
Ca-channel blockers (%)	23 (27.7)	3 (17.6)	11 (34.4)	9 (28.1)	0.47	0 (0.0)

ACE, angiotensin converting enzyme; ARB, angiotensin receptor blockers; Ca, calcium; HDL, high-density lipoprotein; LDL, low-density lipoprotein; MI, myocardial infarction.

in Table 1. Only two patients qualified for the category of anxious only and their data, although included in analyses, are not presented except in Table 1. The reporting has been structured following the STROBE statement guidelines.⁵⁵

There were no statistically significant differences, based on one-way ANOVAs or 2 × 3 contingency table analyses between the groups except in their BDI and HADS-A scores, which was expected. Overall, a moderate correlation was observed between scores on these indices of depression and anxiety symptom severity ($r^2 = 0.51$, $P < 0.001$).

Figures 2 and 3 (top panels) present the mean platelet reactivity of patients after adjusting for age and body mass index (BMI). For the two anxious only patients, the means (± standard errors) of platelet aggregation (ADP—17.1 ± 10.1%, 5HT:E (L)—43.4 ± 10.3%, and 5HT:E (H)—49.0 ± 10.6%) and platelet surface receptor activation (ADP—13.3 ± 13.4%, 5HT:E (L)—23.5 ± 12.7%, and 5HT:E (H)—25.5 ± 12.5%) are not included in the figures.

The anxious only groups (with and without depression) demonstrated a consistent association with higher reactivity to serotonin, in all measures of platelet function. In aggregation studies, the depressed and anxious group had significantly higher 5HT:E-mediated platelet reactivity than the depressed only and the non-depressed and non-anxious groups, whereas the latter two groups were not significantly different from each other (Figure 2). Platelet aggregation in response to ADP was higher in the depressed groups (with and without anxiety) vs. the non-depressed, but this was not statistically significant.

Findings in the flow cytometric assessment of platelet activation were similar (Figure 3), but only the results with high-dose 5HT:E achieved statistical significance.

Depression and anxiety symptom severity as predictors of platelet reactivity

Anxiety symptom severity, represented by continuous HADS-A scores, exhibited consistent correlations with serotonin-mediated platelet reactivity in both aggregation and flow cytometry studies. These correlations were significant with 5-HT:E-mediated aggregations at both low dose ($r = 0.25$, $P = 0.023$) and high dose ($r = 0.28$, $P = 0.011$). In flow cytometry studies, these correlations were just as strong with platelet surface receptor activation in response to 5HT:E ($r = 0.33$, $P = 0.003$ with low dose and $r = 0.28$, $P = 0.012$ with high dose). Depression symptom severity displayed a weaker and inconsistent relationship to platelet reactivity measures, with some degree of correlation noted in 5HT:E-mediated aggregation that only reached statistical significance with the high dose ($r = 0.20$, $P = 0.079$ and $r = 0.26$, $P = 0.02$). Neither depression nor anxiety symptom severity showed any associations with ADP-mediated platelet reactivity.

To better define the relationship of depression and anxiety symptom severity with platelet reactivity, a multivariate model was tested, controlling for age and BMI. With both BDI and HADS-A score in the equation, anxiety symptom severity remained a significant predictor of 5HT-mediated platelet reactivity, whereas depression symptom severity did not (Tables 2 and 3,

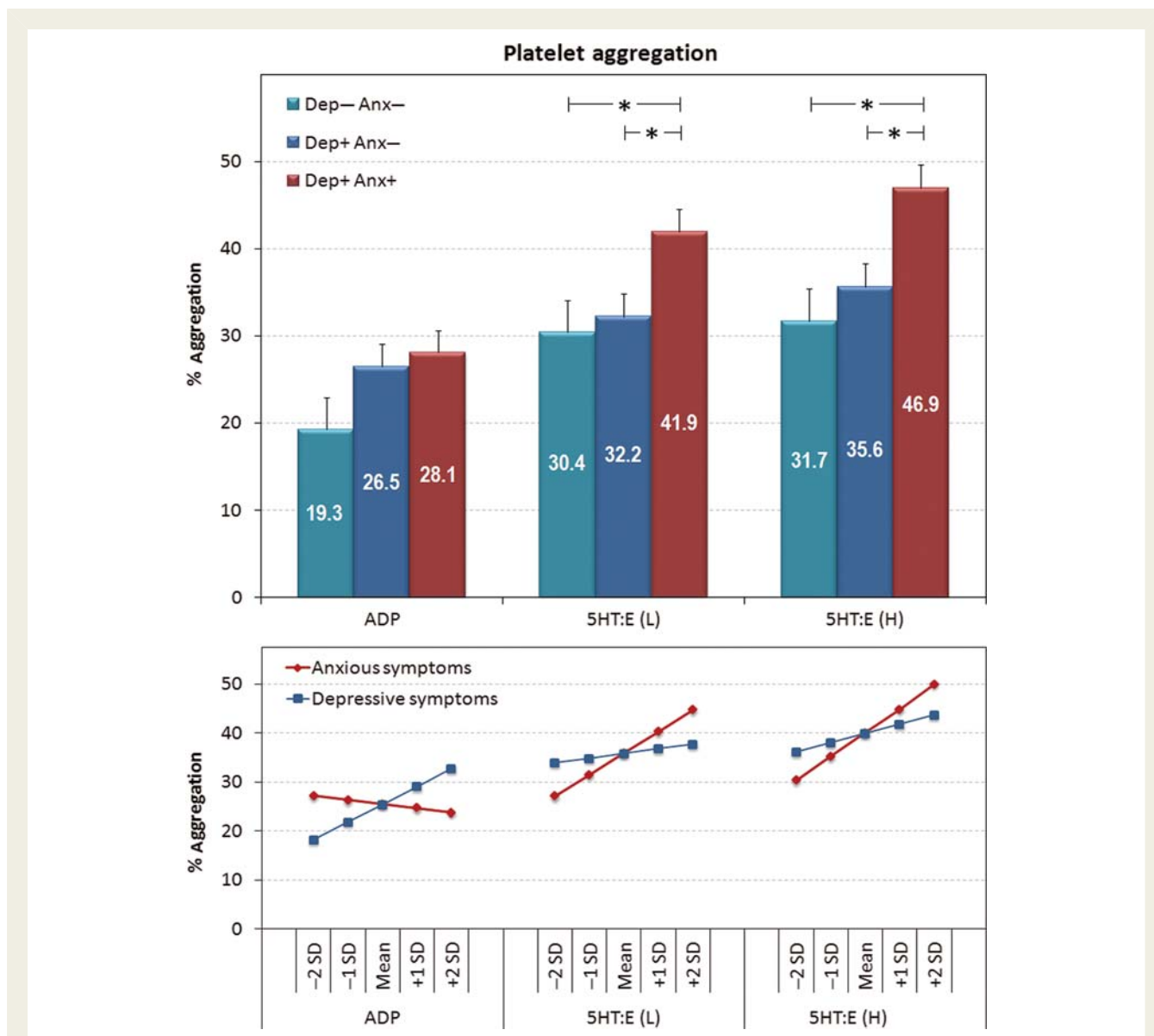


Figure 2 Top panel shows platelet aggregation result (estimated means \pm standard error) in stable CAD patients grouped into *non-depressed and non-anxious* (Dep- Anx-), *depressed only* (Dep+ Anx-), and *depressed and anxious* (Dep+ Anx+). Bottom panel presents linear relations of depressive and anxious symptoms (BDI and HADS-A scores expressed in standard deviations from their means) to aggregation after controlling for age, BMI, and each other. * $P < 0.05$.

bottom panels of Figures 2 and 3). Thus, depression symptom severity, which had exhibited significant correlation with high-dose 5HT:E platelet aggregation in the unadjusted analysis, was no longer associated with any of the platelet reactivity measures. Findings with ADP-mediated platelet reactivity did not change from the unadjusted analysis.

To ensure that the differences in platelet reactivity to 5HT:E were in fact serotonin-mediated and not the result of epinephrine, same concentration of epinephrine ($4 \mu\text{M}$) was tested separately as a sole platelet aggregation agonist. No differences in epinephrine-mediated platelet reactivity between any of the groups were observed (data not shown).

Discussion

Despite the associations of psychological factors with recurrent cardiac events, and emerging evidence that in addition to such factors as hostility and depression, anxiety may have independent 'cardiotoxic' effects, few studies have examined the roles of depression and anxiety in such associations concurrently. Furthermore, a complete understanding of the mechanisms that may link these emotional factors with cardiac events has been lacking.¹³ Depression has been associated with an increase in platelet reactivity in ACS patients, and serotonin, one of many platelet activators, has been hypothesized to be one of the links connecting

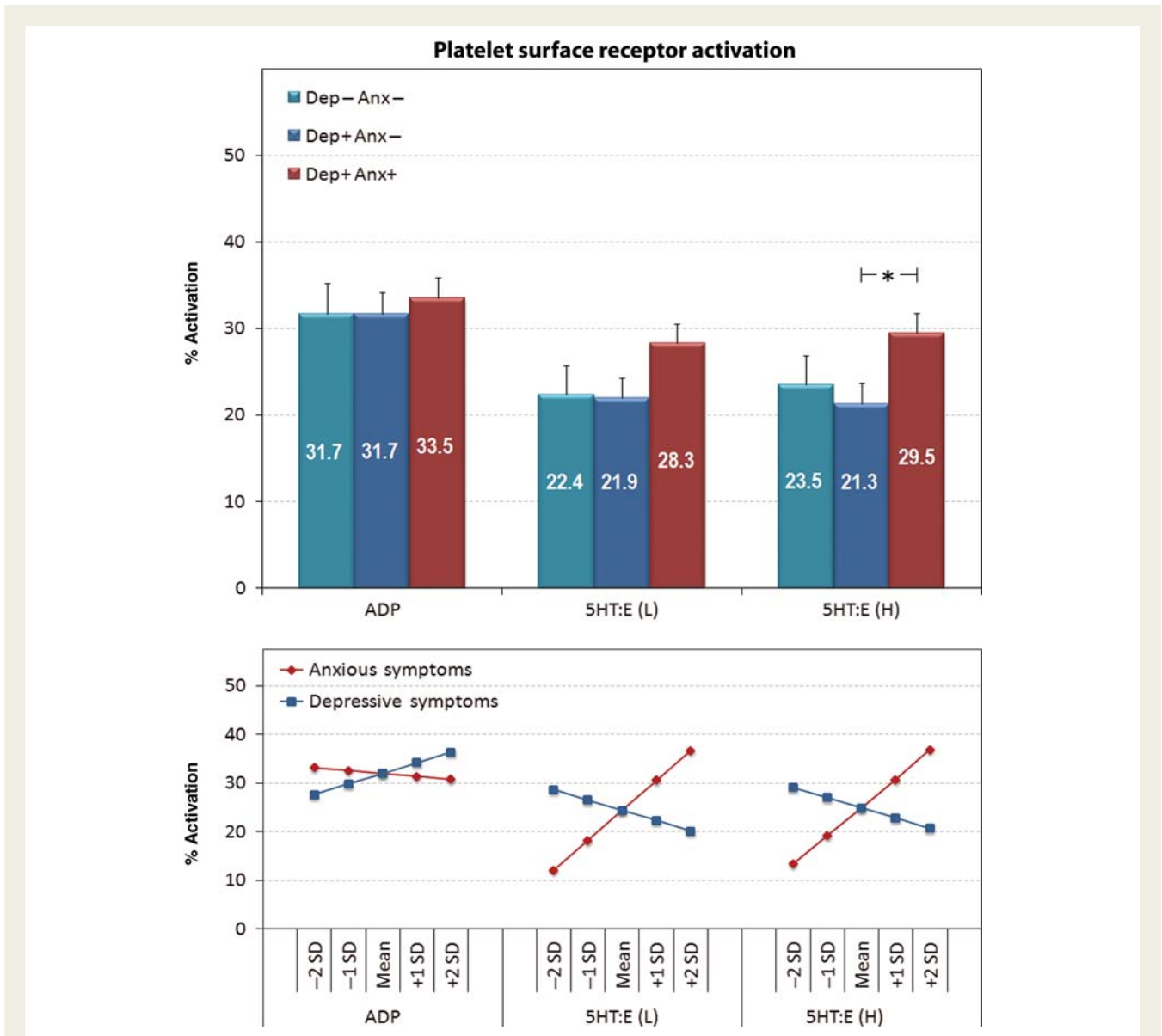


Figure 3 Top panel presents flow cytometric measurement of platelet surface receptor activation (estimated means \pm standard error) in stable CAD patients grouped into *non-depressed and non-anxious* (Dep- Anx-), *depressed only* (Dep+ Anx-), and *depressed and anxious* (Dep+ Anx+). Bottom panel presents linear relations of depressive and anxious symptoms (BDI and HADS-A scores expressed in standard deviations from their means) to platelet surface receptor activation after controlling for age, BMI, and each other. * $P < 0.05$.

the two variables. Anxiety has similarly been associated with platelet function and activity during laboratory stress probes among individuals characterized by chronic life stress.⁴⁰

Our aim was to investigate the associations of both depression and of anxiety with platelet function among patients several months after ACS when they were presumed to be stable. We also sought to assess the independent predictive value of these factors on platelet function in the same model. We found that patients categorized with depression demonstrated greater platelet reactivity to both ADP and serotonin, though this relationship did not reach statistical significance. In contrast, patients characterized with anxiety, according to this same criterion, demonstrated significantly greater platelet reactivity. A multivariate model that included these two factors as

continuous measures of symptom severity revealed that only anxiety was associated with higher platelet reactivity, in both aggregation and flow cytometric measures of platelet function, and furthermore, that this hyper-reactivity was mediated via serotonin. The lack of any significant differences in the ADP-mediated platelet reactivity could be due to clopidogrel treatment, which specifically inhibits the P2Y₁₂ receptor responsible for ADP-mediated platelet reactivity. Aspirin and clopidogrel combination therapy has also been reported to affect serotonin-induced platelet aggregation at 15 min, but not 6 min, of test run.⁵⁶ However, as our run times for aggregation studies were 6 min and all patients were on daily aspirin (81 mg) and clopidogrel (75 mg) therapy for 3 months prior to platelet function testing, it is unlikely to be a factor of any significance.

Table 2 Relation of depression and anxiety symptom severity to platelet aggregation

	Unstandardized coefficients		Standardized coefficients	t	P-value
	Beta	Std. error	Beta		
ADP-mediated					
Constant	25.48	1.56		16.30	0.00
Depressive symptoms	0.48	0.25	0.25	1.95	0.06
Anxious symptoms	-0.19	0.43	-0.06	-0.45	0.65
Age	0.22	0.15	0.17	1.50	0.14
BMI	-0.44	0.28	-0.17	-1.58	0.12
5HT:E (low dose)-mediated					
Constant	35.90	1.59		22.63	0.00
Depressive symptoms	0.13	0.25	0.07	0.54	0.59
Anxious symptoms	0.99	0.43	0.29	2.28	0.03
Age	0.27	0.15	0.20	1.87	0.07
BMI	-0.61	0.26	-0.25	-2.35	0.02
5HT:E (high dose)-mediated					
Constant	39.59	1.64		24.13	0.00
Depressive symptoms	0.25	0.26	0.12	0.98	0.33
Anxious symptoms	1.12	0.45	0.30	2.49	0.02
Age	0.40	0.15	0.28	2.64	0.01
BMI	-0.62	0.27	-0.24	-2.30	0.02

ADP, adenosine diphosphate; BMI, body mass index; 5HT:E, serotonin + epinephrine. Bold values indicate $P < 0.05$.

Table 3 Relation of depression and anxiety symptom severity to platelet receptor activation

	Unstandardized coefficients		Standardized coefficients	t	P-value
	Beta	Std. error	Beta		
ADP-mediated					
Constant	31.99	1.52		21.03	0.00
Depressive symptoms	-0.08	0.24	-0.04	-0.33	0.75
Anxious symptoms	0.49	0.41	0.16	1.20	0.24
Age	0.25	0.14	0.21	1.81	0.08
BMI	-0.37	0.28	-0.15	-1.32	0.19
5HT:E (low dose)-mediated					
Constant	24.40	1.32		18.44	0.00
Depressive symptoms	-0.28	0.21	-0.16	-1.32	0.19
Anxious symptoms	1.37	0.36	0.48	3.83	<0.01
Age	0.35	0.12	0.31	2.88	<0.01
BMI	-0.09	0.22	-0.04	-0.38	0.71
5HT:E (high dose)-mediated					
Constant	24.81	1.38		17.94	0.00
Depressive symptoms	-0.28	0.22	-0.16	-1.28	0.21
Anxious symptoms	1.30	0.37	0.44	3.47	<0.01
Age	0.42	0.13	0.35	3.31	<0.01
BMI	-0.06	0.23	-0.03	-0.25	0.81

ADP, adenosine diphosphate; BMI, body mass index; 5HT:E, serotonin + epinephrine. Bold values indicate $P < 0.05$.

Our findings suggest that although depression is associated with general platelet hyper-reactivity, anxiety may be a more dominant factor driving this increase, mediated via serotonin. This biological mechanism may account for the increased risk of recurrent events observed in cardiac patients with clinically meaningful levels of anxiety. The association of anxiety with platelet reactivity could also provide a plausible explanation for some of the inconsistencies in published reports linking emotional distress with increased CVD risk.⁵⁷ A varying proportion of patients with anxiety may be enrolled in some of these studies, rendering anxiety an unmeasured confound.

Our present study supports the findings reported in recent clinical studies. For example, Strik et al.³² reported both anxiety and depression to be predictors of cardiac death or recurrent events in post-AMI patients, whereas Frasure-Smith and Lesperance³⁴ found both depression and anxiety to be predictive of cardiac events in stable post-ACS patients. However, in both studies, multivariate analysis including both depression and anxiety showed only anxiety to be an independent predictor of recurrent events. In yet another study, average exposure to anxiety over time in stable CAD patients was independently associated with an increased risk of non-fatal myocardial infarction or mortality; this study, however, did not examine the contributions of depression.⁵⁸

It is important to note that a number of pathways have been suggested to link psychological factors, including depression and anxiety, to CAD-related outcomes. Among these are dysregulation in autonomic function, characterized by increased sympathetic and decreased parasympathetic control⁵⁹ and inflammatory processes.^{60,61} Furthermore, the influence of autonomic pathways in the regulation of inflammatory processes, as suggested by Tracey,⁶² has been observed in depressed patients with CHD.⁶³ Of interest, the latter study also found indices of coagulability elevated in relation to autonomic factors in this population; whether this occurs when anxiety is present is not yet known.

Current guidelines suggest screening cardiac patients for depression as its presence signals a worse cardiovascular prognosis.²³ Much less attention has been focused on anxiety. Our findings suggest that we should also be alert to symptoms of anxiety in these patients. Their timely identification could lead to the initiation of appropriate intervention to mitigate the risk for adverse cardiovascular outcomes associated with this factor. Interventions to accomplish this could include both more intensive anti-platelet therapy to directly address the mechanisms revealed in the current study, and behavioural interventions including exercise training that has also been shown to reduce depression and improve event free-survival in CAD patients,^{25,64} and stress management, which has been shown to reduce overall psychosocial risk while improving both event-free survival and emotional stress provoked myocardial ischaemia.⁶⁵ However, it remains unknown if decreasing anxiety would remediate platelet function, or improve CAD outcomes.

Study limitations

The overall study sample was small and thus, the number of patients who qualified as anxious but not depressed in this study was low. This, however, represents the real world occurrence of anxiety, which is rarely encountered in the absence of depression.

Importantly, this limitation applies only to the categorical analyses and is overridden by the stronger findings of the multivariate analysis, where symptoms of anxiety are shown to have a highly significant, linear relationship with platelet reactivity, independently of depression symptoms. Also of note, the relationship between anxiety and platelet function was found to be mediated by serotonin but not epinephrine. Although serotonergic pathways have been implicated in anxiety disorders,⁶⁶ sympathetic activation is also a hallmark of this clinical classification.⁶⁷ This finding may in part be a function of the co-morbid status of most patients with classified with anxiety in the current study. Further research with larger samples should address this issue.

Conclusions

The presence of anxiety symptoms is associated with higher platelet reactivity in stable CAD patients. This increase in platelet function is serotonin mediated and is independent of the effects of depression. Anxiety may therefore be a better predictor of platelet reactivity in CAD patients than depression.

Supplementary material

Supplementary material is available at *European Heart Journal* online.

Acknowledgements

The authors thank Noemi Escalera and Dr Boris Cortes for their technical expertise in the performance of platelet function studies. We also thank Karen Hiensch, Ekaterina Staikova, Judith Griffin, Adjoa Boateng, and Cindy Huang for the recruitment and interviewing of patients.

Funding

This work was supported by the National Institutes of Health (grant numbers HL071264, HC25197-05, and HL084034) and M.P.-Y. received funding for his research fellowship from Fundacion Caja Madrid, Spain.

Conflict of interest: none declared.

References

- Chida Y, Steptoe A. The association of anger and hostility with future coronary heart disease: a meta-analytic review of prospective evidence. *J Am Coll Cardiol* 2009;**53**:936–946.
- Wellenius GA, Mukamal KJ, Kulshreshtha A, Asonganyi S, Mittleman MA. Depressive symptoms and the risk of atherosclerotic progression among patients with coronary artery bypass grafts. *Circulation* 2008;**117**:2313–2319.
- Brotman DJ, Golden SH, Wittstein IS. The cardiovascular toll of stress. *Lancet* 2007;**370**:1089–1100.
- Cohen S, Janicki-Deverts D, Miller GE. Psychological stress and disease. *J Am Med Assoc* 2007;**298**:1685–1687.
- Davidson KW, Kupfer DJ, Bigger JT, Califf RM, Carney RM, Coyne JC, Czajkowski SM, Frank E, Frasure-Smith N, Freedland KE, Froelicher ES, Glassman AH, Katon WJ, Kaufmann PG, Kessler RC, Kraemer HC, Krishnan KR, Lesperance F, Rieckmann N, Sheps DS, Suls JM. Assessment and treatment of depression in patients with cardiovascular disease: National Heart, Lung, and Blood Institute Working Group Report. *Psychosom Med* 2006;**68**:645–650.
- Rozanski A, Blumenthal JA, Davidson KW, Saab PG, Kubzansky L. The epidemiology, pathophysiology, and management of psychosocial risk factors in cardiac

- practice: the emerging field of behavioral cardiology. *J Am Coll Cardiol* 2005;**45**:637–651.
7. Ziegelstein RC. Acute emotional stress and cardiac arrhythmias. *J Am Med Assoc* 2007;**298**:324–329.
 8. Dimsdale JE. Psychological stress and cardiovascular disease. *J Am Coll Cardiol* 2008;**51**:1237–1246.
 9. Yusuf S, Hawken S, Ounpuu S, Dans T, Avezum A, Lanas F, McQueen M, Budaj A, Pais P, Varigos J, Lisheng L. Effect of potentially modifiable risk factors associated with myocardial infarction in 52 countries (the INTERHEART study): case-control study. *Lancet* 2004;**364**:937–952.
 10. Whang W, Kubzansky LD, Kawachi I, Rexrode KM, Kroenke CH, Glynn RJ, Garan H, Albert CM. Depression and risk of sudden cardiac death and coronary heart disease in women: results from the Nurses' Health Study. *J Am Coll Cardiol* 2009;**53**:950–958.
 11. Kuper H, Marmot M, Hemingway H. Systematic Review of Prospective Cohort Studies of Psychosocial Factors in the Etiology and Prognosis of Coronary Heart Disease. *Semin Vasc Med* 2002;**2**:267–314.
 12. Hemingway H, Marmot M. Evidence based cardiology: psychosocial factors in the aetiology and prognosis of coronary heart disease. Systematic review of prospective cohort studies. *BMJ* 1999;**318**:1460–1467.
 13. Suls J, Bunde J. Anger, anxiety, and depression as risk factors for cardiovascular disease: the problems and implications of overlapping affective dispositions. *Psychol Bull* 2005;**131**:260–300.
 14. Steptoe A, Strike PC, Perkins-Porras L, McEwan JR, Whitehead DL. Acute depressed mood as a trigger of acute coronary syndromes. *Biol Psychiatry* 2006;**60**:837–842.
 15. Lampert R, Joska T, Burg MM, Batsford WP, McPherson CA, Jain D. Emotional and physical precipitants of ventricular arrhythmia. *Circulation* 2002;**106**:1800–1805.
 16. Whang W, Albert CM, Sears SF Jr, Lampert R, Conti JB, Wang PJ, Singh JP, Ruskin JN, Muller JE, Mittleman MA. Depression as a predictor for appropriate shocks among patients with implantable cardioverter-defibrillators: results from the Triggers of Ventricular Arrhythmias (TOVA) study. *J Am Coll Cardiol* 2005;**45**:1090–1095.
 17. Thoms BD, Bass EB, Ford DE, Stewart KJ, Tsilidis KK, Patel U, Fauerbach JA, Bush DE, Ziegelstein RC. Prevalence of depression in survivors of acute myocardial infarction. *J Gen Intern Med* 2006;**21**:30–38.
 18. Rutledge T, Vaccarino V, Johnson BD, Bittner V, Olson MB, Linke SE, Cornell CE, Eteiba W, Sheps DS, Francis J, Krantz DS, Bairey Merz CN, Parashar S, Handberg E, Vido DA, Shaw LJ. Depression and cardiovascular health care costs among women with suspected myocardial ischemia: prospective results from the WISE (Women's Ischemia Syndrome Evaluation) Study. *J Am Coll Cardiol* 2009;**53**:176–183.
 19. Barth J, Schumacher M, Herrmann-Lingen C. Depression as a risk factor for mortality in patients with coronary heart disease: a meta-analysis. *Psychosom Med* 2004;**66**:802–813.
 20. Nicholson A, Kuper H, Hemingway H. Depression as an aetiological and prognostic factor in coronary heart disease: a meta-analysis of 6362 events among 146 538 participants in 54 observational studies. *Eur Heart J* 2006;**27**:2763–2774.
 21. van Melle JP, de Jonge P, Spijkerman TA, Tijssen JG, Ormel J, van Veldhuisen DJ, van den Brink RH, van den Berg MP. Prognostic association of depression following myocardial infarction with mortality and cardiovascular events: a meta-analysis. *Psychosom Med* 2004;**66**:814–822.
 22. Van der Kooy K, van Hout H, Marwijk H, Marten H, Stehouwer C, Beekman A. Depression and the risk for cardiovascular diseases: systematic review and meta analysis. *Int J Geriatr Psych* 2007;**22**:613–626.
 23. Lichtman JH, Bigger JT Jr, Blumenthal JA, Frasure-Smith N, Kaufmann PG, Lesperance F, Mark DB, Sheps DS, Taylor CB, Froelicher ES. Depression and coronary heart disease: recommendations for screening, referral, and treatment: a science advisory from the American Heart Association Prevention Committee of the Council on Cardiovascular Nursing, Council on Clinical Cardiology, Council on Epidemiology and Prevention, and Interdisciplinary Council on Quality of Care and Outcomes Research: endorsed by the American Psychiatric Association. *Circulation* 2008;**118**:1768–1775.
 24. Lavie CJ, Milani RV. Prevalence of anxiety in coronary patients with improvement following cardiac rehabilitation and exercise training. *Am J Cardiol* 2004;**93**:336–339.
 25. Lavie CJ, Milani RV. Adverse psychological and coronary risk profiles in young patients with coronary artery disease and benefits of formal cardiac rehabilitation. *Arch Intern Med* 2006;**166**:1878–1883.
 26. Kessler RC, Chiu WT, Demler O, Walters EE. Prevalence, severity, and comorbidity of 12-month DSM-IV disorders in the national comorbidity survey replication. *Arch Gen Psychiat* 2005;**62**:617–627.
 27. Davidson KW, Rieckmann N, Rapp M. Definitions and distinctions among depressive syndromes and symptoms: implications for a better understanding of the depression–cardiovascular disease association. *Psychosom Med* 2005;**67**:S6–S9.
 28. Heim C, Nemeroff CB. The impact of early adverse experiences on brain systems involved in the pathophysiology of anxiety and affective disorders. *Biol Psychiat* 1999;**46**:1509–1522.
 29. Roy-Byrne PP, Davidson KW, Kessler RC, Asmundson GJ, Goodwin RD, Kubzansky L, Lydiard RB, Massie MJ, Katon W, Laden SK, Stein MB. Anxiety disorders and comorbid medical illness. *Gen Hosp Psychiatry* 2008;**30**:208–225.
 30. Kubzansky LD, Cole SR, Kawachi I, Vokonas P, Sparrow D. Shared and unique contributions of anger, anxiety, and depression to coronary heart disease: a prospective study in the normative aging study. *Ann Behav Med* 2006;**31**:21–29.
 31. Rothenbacher D, Hahmann H, Wusten B, Koenig W, Brenner H. Symptoms of anxiety and depression in patients with stable coronary heart disease: prognostic value and consideration of pathogenetic links. *Eur J Cardiovasc Prev Rehabil* 2007;**14**:547–554.
 32. Strik J, Denollet J, Lousberg R, Honig A. Comparing symptoms of depression and anxiety as predictors of cardiac events and increased health care consumption after myocardial infarction. *J Am Coll Cardiol* 2003;**42**:1801–1807.
 33. Shen B-J, Avivi YE, Todaro JF, Spiro A III, Laurenceau J-P, Ward KD, Niaura R. Anxiety characteristics independently and prospectively predict myocardial infarction in men: the unique contribution of anxiety among psychological factors. *J Am Coll Cardiol* 2008;**51**:113–119.
 34. Frasure-Smith N, Lesperance F. Depression and anxiety as predictors of 2-year cardiac events in patients with stable coronary artery disease. *Arch Gen Psychiat* 2008;**65**:62–71.
 35. Nemeroff CB, Musselman DL. Are platelets the link between depression and ischemic heart disease? *Am Heart J* 2000;**140**:57–62.
 36. Schins A, Honig A, Crijns H, Baur L, Hamulyak K. Increased coronary events in depressed cardiovascular patients: 5-HT_{2A} receptor as missing link? *Psychosom Med* 2003;**65**:729–737.
 37. Shimbo D, Davidson KW, Haas DC, Fuster V, Badimon JJ. Negative impact of depression on outcomes in patients with coronary artery disease: mechanisms, treatment considerations, and future directions. *J Thromb Haemost* 2005;**3**:897–908.
 38. Bruce EC, Musselman DL. Depression, alterations in platelet function, and ischemic heart disease. *Psychosom Med* 2005;**67**(Suppl. 1):S34–S36.
 39. Lederbogen F, Baranyai R, Gilles M, Menart-Houtermans B, Tschoepe D, Deuschle M. Effect of mental and physical stress on platelet activation markers in depressed patients and healthy subjects: a pilot study. *Psychiatry Res* 2004;**127**:55–64.
 40. Aschbacher K, Mills PJ, von Kanel R, Hong S, Mausbach BT, Roepke SK, Dimsdale JE, Patterson TL, Ziegler MG, Ancoli-Israel S, Grant I. Effects of depressive and anxious symptoms on norepinephrine and platelet P-selectin responses to acute psychological stress among elderly caregivers. *Brain Behav Immun* 2008;**22**:493–502.
 41. Markovitz JH, Matthews KA, Kiss J, Smitherman TC. Effects of hostility on platelet reactivity to psychological stress in coronary heart disease patients and in healthy controls. *Psychosom Med* 1996;**58**:143–149.
 42. Shimbo D, Chaplin W, Kuruvilla S, Wasson LT, Abraham D, Burg MM. Hostility and platelet reactivity in individuals without a history of cardiovascular disease events. *Psychosom Med* 2009;**71**:741–747.
 43. Maes M, Van Gastel A, Delmeire L, Kenis G, Bosmans E, Song C. Platelet alpha₂-adrenoceptor density in humans: relationships to stress-induced anxiety, psychasthenic constitution, gender and stress-induced changes in the inflammatory response system. *Psychol Med* 2002;**32**:919–928.
 44. Vanhoutte PM. Platelet-derived serotonin, the endothelium, and cardiovascular disease. *J Cardiovasc Pharmacol* 1991;**17**(Suppl. 5):S6–S12.
 45. Shimbo D, Child J, Davidson K, Geer E, Osende JI, Reddy S, Dronge A, Fuster V, Badimon JJ. Exaggerated serotonin-mediated platelet reactivity as a possible link in depression and acute coronary syndromes. *Am J Cardiol* 2002;**89**:331–333.
 46. Badimon L, Martinez-Gonzalez J, Royo T, Lassila R, Badimon JJ. A sudden increase in plasma epinephrine levels transiently enhances platelet deposition on severely damaged arterial wall—studies in a porcine model. *Thromb Haemost* 1999;**82**:1736–1742.
 47. von Kanel R. Platelet hyperactivity in clinical depression and the beneficial effect of antidepressant drug treatment: how strong is the evidence? *Acta Psychiatr Scand* 2004;**110**:163–177.
 48. Roevens P, De Clerck F, de Chaffoy de Courcelles D. The synergistic effect of 5-hydroxytryptamine and epinephrine on the human platelet is related to the activation of phospholipase C. *Eur J Pharmacol* 1993;**245**:273–280.
 49. Barlow DH. *Anxiety and Its Disorders*. 3rd ed. New York: The Guilford Press; 2002.
 50. Beck AT, Ward CH, Mendelson M. An inventory for measuring depression. *Arch Gen Psychiat* 1961;**4**:561–571.
 51. Buros OK. *The Hospital Anxiety and Depression Scale*. Highland Park, NJ: Gryphon Press; 1970.
 52. Herrmann C. International experiences with the Hospital Anxiety and Depression Scale—a review of validation data and clinical results. *J Psychosom Res* 1997;**42**:17–41.

53. Kuijpers PM, Denollet J, Lousberg R, Wellens HJ, Crijs H, Honig A. Validity of the hospital anxiety and depression scale for use with patients with noncardiac chest pain. *Psychosomatics* 2003;**44**:329–335.
54. Vilahur G, Choi BG, Zafar MU, Viles-Gonzalez JF, Vorchheimer DA, Fuster V, Badimon JJ. Normalization of platelet reactivity in clopidogrel-treated subjects. *J Thromb Haemost* 2007;**5**:82–90.
55. von Elm E, Altman DG, Egger M, Pocock SJ, Gotsche PC, Vandenbroucke JP. The Strengthening the Reporting of Observational Studies in Epidemiology (STROBE) statement: guidelines for reporting observational studies. *Lancet* 2007;**370**:1453–1457.
56. Jagroop IA, Matsagas MI, Geroulakos G, Mikhailidis DP. The effect of clopidogrel, aspirin and both antiplatelet drugs on platelet function in patients with peripheral arterial disease. *Platelets* 2004;**15**:117–125.
57. Lane D, Carroll D, Ring C, Beevers DG, Lip GY. In-hospital symptoms of depression do not predict mortality 3 years after myocardial infarction. *Int J Epidemiol* 2002;**31**:1179–1182.
58. Shibeshi WA, Young-Xu Y, Blatt CM. Anxiety worsens prognosis in patients with coronary artery disease. *J Am Coll Cardiol* 2007;**49**:2021–2027.
59. Carney RM, Freedland KE, Veith RC. Depression, the autonomic nervous system, and coronary heart disease. *Psychosom Med* 2005;**67**(Suppl. 1):S29–S33.
60. Frasure-Smith N, Lesperance F, Irwin MR, Sauve C, Lesperance J, Theroux P. Depression, C-reactive protein and two-year major adverse cardiac events in men after acute coronary syndromes. *Biol Psychiatry* 2007;**62**:302–308.
61. Bankier B, Barajas J, Martinez-Rumayor A, Januzzi JL. Association between C-reactive protein and generalized anxiety disorder in stable coronary heart disease patients. *Eur Heart J* 2008;**29**:2212–2217.
62. Tracey KJ. The inflammatory reflex. *Nature* 2002;**420**:853–859.
63. Carney RM, Freedland KE, Stein PK, Miller GE, Steinmeyer B, Rich MW, Duntley SP. Heart rate variability and markers of inflammation and coagulation in depressed patients with coronary heart disease. *J Psychosom Res* 2007;**62**:463–467.
64. Milani RV, Lavie CJ. Impact of cardiac rehabilitation on depression and its associated mortality. *Am J Med* 2007;**120**:799–806.
65. Blumenthal JA, Babyak M, Wei J, O'Connor C, Waugh R, Eisenstein E, Mark D, Sherwood A, Woodley PS, Irwin RJ, Reed G. Usefulness of psychosocial treatment of mental stress-induced myocardial ischemia in men. *Am J Cardiol* 2002;**89**:164–168.
66. Roose SP. Depression, anxiety, and the cardiovascular system: the psychiatrist's perspective. *J Clin Psychiatry* 2001;**62**(Suppl. 8):19–22. discussion 23.
67. Friedman BH, Thayer JF. Autonomic balance revisited: panic anxiety and heart rate variability. *J Psychosom Res* 1998;**44**:133–151.